

- >> BOOST PERFORMANCE
- >> REDUCE COST
- >> INCREASE AGILITY
- >> ENHANCE CRM
- >> SHORTEN TIME TO MARKET
- >> DRIVE INNOVATION
- >> IMPROVE EFFICIENCY
- >> INCREASE ADAPTIVITY
- >> ENABLE BUSINESS TRANSPARENCY
- >> ENSURE REGULATORY COMPLIANCE

Atos 
Origin

WORLDWIDE IT PARTNER



Atos Origin - Advance your Business

Atos Origin Enterprise Compliance Portfolio

The Solution to SAP EH&S, REACH, GHS and Label Printing



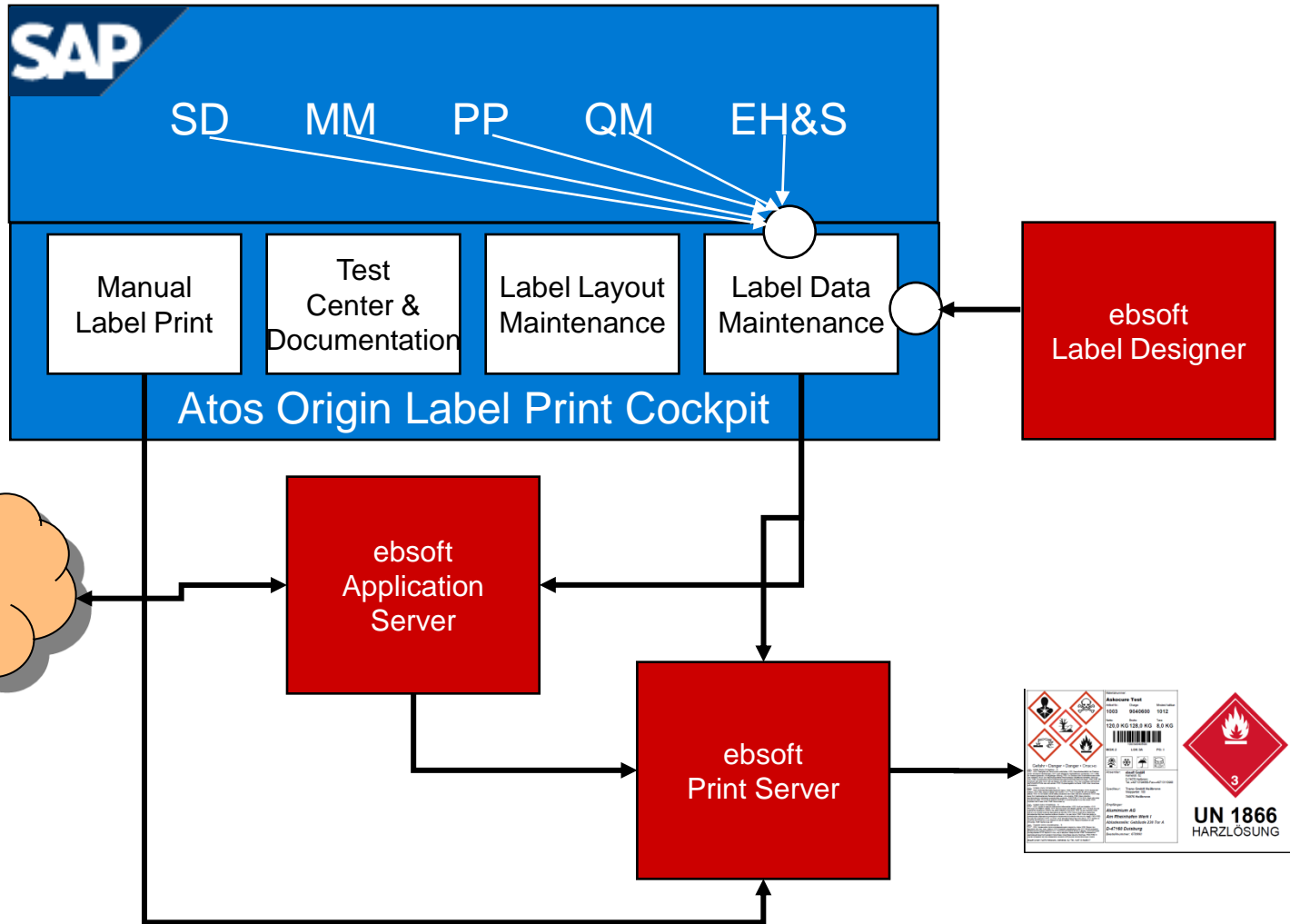
GHS and REACH
Global
Best Practices for
Chemicals



Services	EH&S and Compliance	Substance Volume Tracking	REACH Compliance Suite
	<ul style="list-style-type: none"> > System installation > Interfaces - DMS, Data Content > Global Best Practices processes 	<ul style="list-style-type: none"> > Global Best Practices processes > Integration processes PP-PI, MM, SD 	<ul style="list-style-type: none"> > System installation > Interfaces-IUCLID5,SIEF,SMTF > Global Best Practices processes
	<ul style="list-style-type: none"> > Managed Regulatory Content > Label Printing > Phrases/Pictograms/Templates 	<ul style="list-style-type: none"> > Regulatory Reporting (VOC, etc.) > Online Compliance Checks 	<ul style="list-style-type: none"> > REACH specific data > Uses and exposure phrases > Managed Regulatory content

SAP Label Print Cockpit

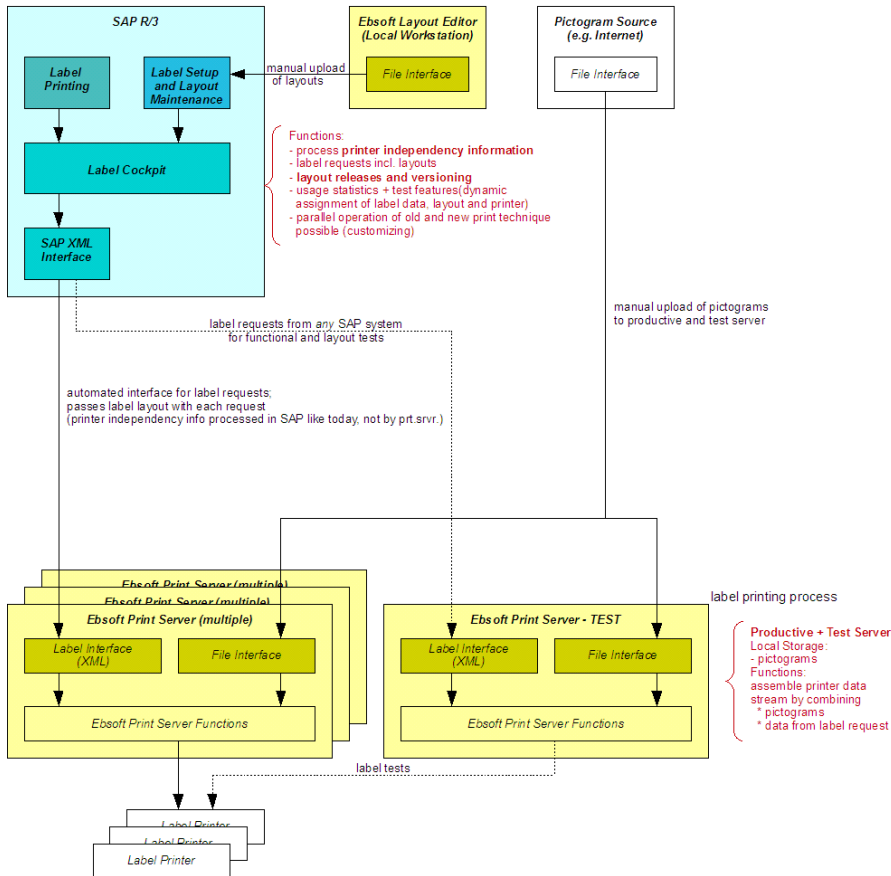
Solution Overview



SAP Label Print Cockpit

Integrated System Architecture

Label Definition and Printing



» Pre-Configured SAP and ebSoft Integration-Scenarios

» Main Features of the SAP Label Print Cockpit

» Central System

- Layout-Maintenance with Versioning and Approval
- Documentation
- all Labels run through central SAP Software Components
- all customizing is done once
- all Features are usable for all Label Layouts

» Fast Implementation

- fully integrated in SAP-Processes
- fully customizable solution with very limited programming needs
- pre-customized data access procedures
- customizing fully documented in SAP
- Test Center

» Flexibility, Performance and Security

- Layout and Content (Data) are generated at runtime e.g. customer specific Barcode
- limited number of Layouts have to be designed and supported
- flexible Software-Configuration guarantees optimized usage of existing infrastructure e.g. in WANs
- Reduced risk of failure by implementing backup systems

» Documentation / Auditing

- Print jobs generated by SAP-Processes
- Print jobs sent to Ebsoft
- All changes in customizing etc.

» ebSoft Label Printing Software

Label Print Cockpit

Solution Offering

Atos Origin SAP Integration

Solution Scope

- » Installation in customer environment
- » Requirement & Customizing-Workshop (Business Blueprint)
- » Label Customizing (up to max. 5 Label-Types)
- » SAP process integration (up to 3 SAP Modules, e.g. SD,MM,PP)
- » Test support
- » Key User Training
- » Go-Live Support

Starter-Pack (Single Client) at Fix Price within Germany: EUR 58.740,-*

Optional

- » Programming of additional customer requirements
- » Application Maintenance and -support

* VAT and Travel Cost not included

Label Print Cockpit

Solution Offering

ebSoft Label Print Software

Solution Scope

- » Pre-Customized **ebsoft** Print-Server Standard, to print all kind of labels directly from SAP
 - » with graphical Layout editor for easy and quick Label design.
 - » with all relevant Graphics and Pictograms for Product Safety – Dangerous Goods – Product Classification...
 - » with integrated rule sets. All kind of labeling requirements can be realized with minimal programming needs.
 - » with the Module “Optimizer” the optimal use of label size will be possible.
- » The Module “Printer independency” allows to print 1 single layout on all Printer-Types, e.g. Laser printer (Black and white and color), Thermo Transfer Printer.

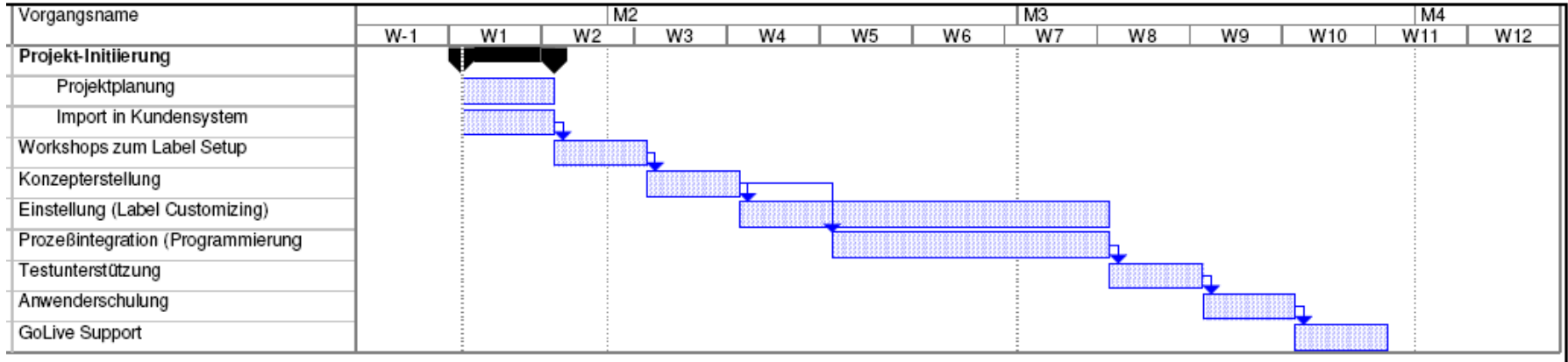
Fix Price for Germany: 9.500.- EUR (24 Printer; 5 WebClients; 1 Editor)

Optional

- » Additional Licenses, e.g. 1 add. Printer or Web Client 250,-€;
1 Client with Editor 1.800,-€
- » Application Maintenance and -support

Label Print Cockpit

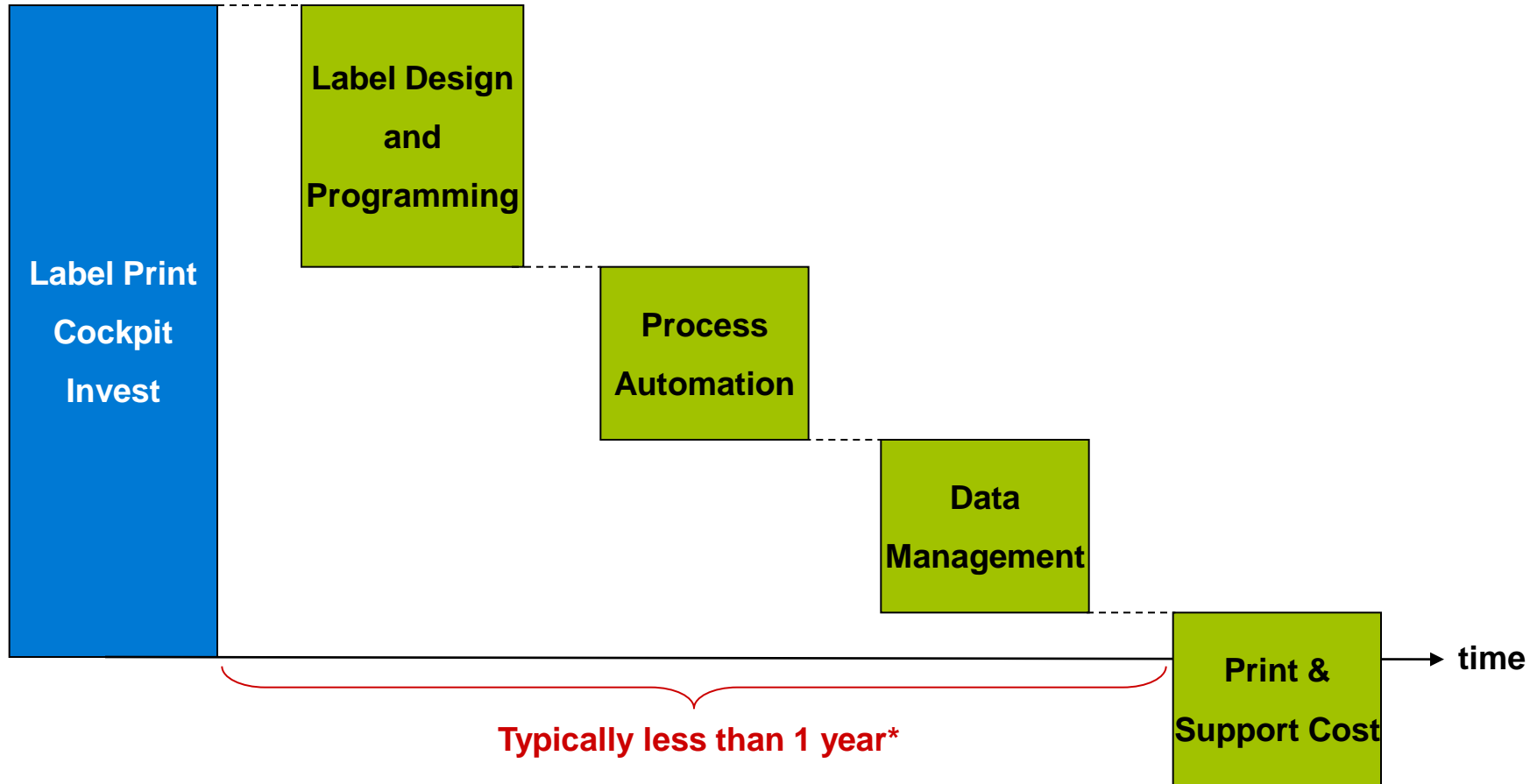
Rough Implementation Schedule



- » Rough Planning; has to be adjusted in each project
- » Customer Obligation to Cooperate
- » Different schedule depending on deployment concept (on premise, hosted, on demand)
- » Server- / Printer- / PC- Hardware and Software to be provided by customer

Label Print Cockpit

Business Case



*To be calculated and verified on a case by case basis!

Label Print Cockpit

Your Benefits

- » Reliable, pre-customized software solution
- » Fast implementation at fix price
- » Quick Return on Invest
- » Low Total Cost of Ownership (significant cost savings can be realized)
- » Global Application Maintenance and Support
- » Reduced Risk of non-compliance
- » Alternate deployment models can be implemented (inclusive on demand, hosted and on premise)
- » High security of your investment – Atos Origin and ebsoft are reliable partners at the leading edge in their markets



Thank you !



Heinz Dönnebrink

Manager Market Unit Chemicals
Germany & Central Europe

Curiestr. 5
70563 Stuttgart

heinz.doennebrink@atosorigin.com

t +49 (0)178 411 24 28
f +49 (0)201 4305 684 3746

www.atosorigin.com

INFO zu

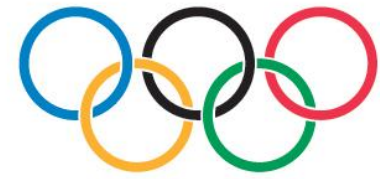
Atos  TM
Origin

CONSULTING > SOLUTIONS > OUTSOURCING

- » BOOST PERFORMANCE
- » REDUCE COST
- » INCREASE AGILITY
- » ENHANCE CRM
- » SHORTEN TIME TO MARKET
- » DRIVE INNOVATION
- » IMPROVE EFFICIENCY
- » INCREASE ADAPTIVITY
- » ENABLE BUSINESS TRANSPARENCY
- » ENSURE REGULATORY COMPLIANCE

Atos 
Origin

WORLDWIDE IT PARTNER



Atos Origin - Advance your Business

Company and Portfolio Overview

Our company



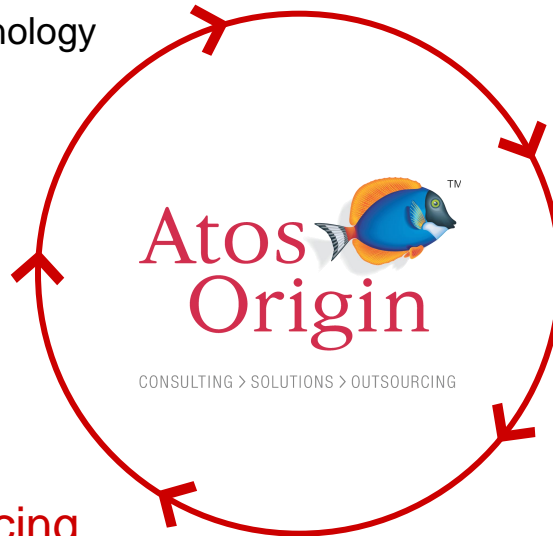
Atos Origin is a leading IT services company providing consulting, systems integration and outsourcing solutions – delivering business outcomes globally.

- » Annual revenues of € 5.1 billion
- » Over 49.000 employees
- » In 40 countries worldwide

An end-to-end service portfolio: The entire value chain of IT services

Consulting

- » Business, process, technology and strategy consulting
- » Focused on dedicated industries with deep sector expertise
- » A European leader with > 2.600 consultants



Outsourcing

- » Strategic partner of the largest european companies
- » Outstanding track record for integrating people and processes
- » Follow the sun delivery network
- » eServices
- » Europe's leader in Electronic Payment

Systems Integration

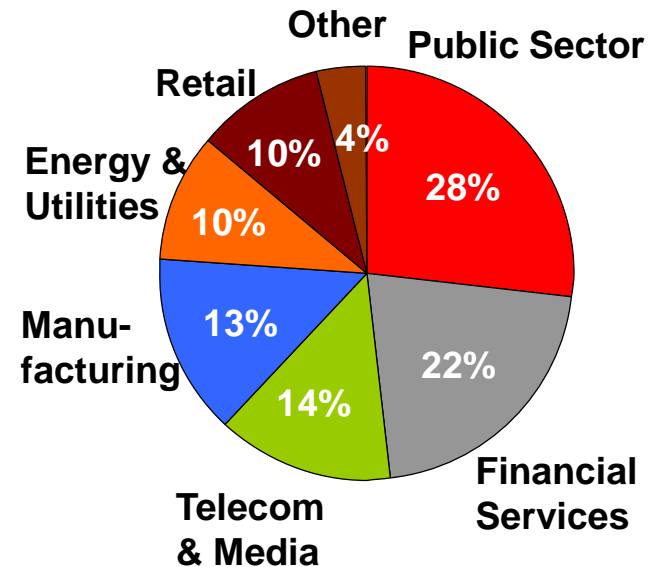
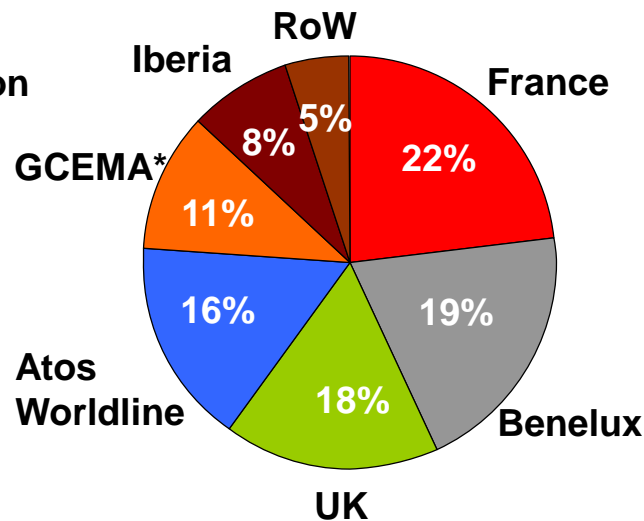
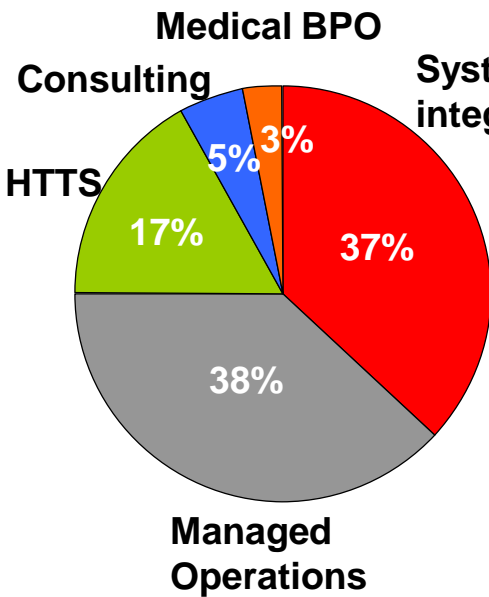
- » Specialized solutions by industry and technology – embracing innovation
- » Top ERP integrator in Europe with strong alliances
- » Strong expertise in large projects and worldwide roll-outs
- » Strong global sourcing expertise

Our profile: A well-balanced portfolio

Business Mix:
End-to-end offerings

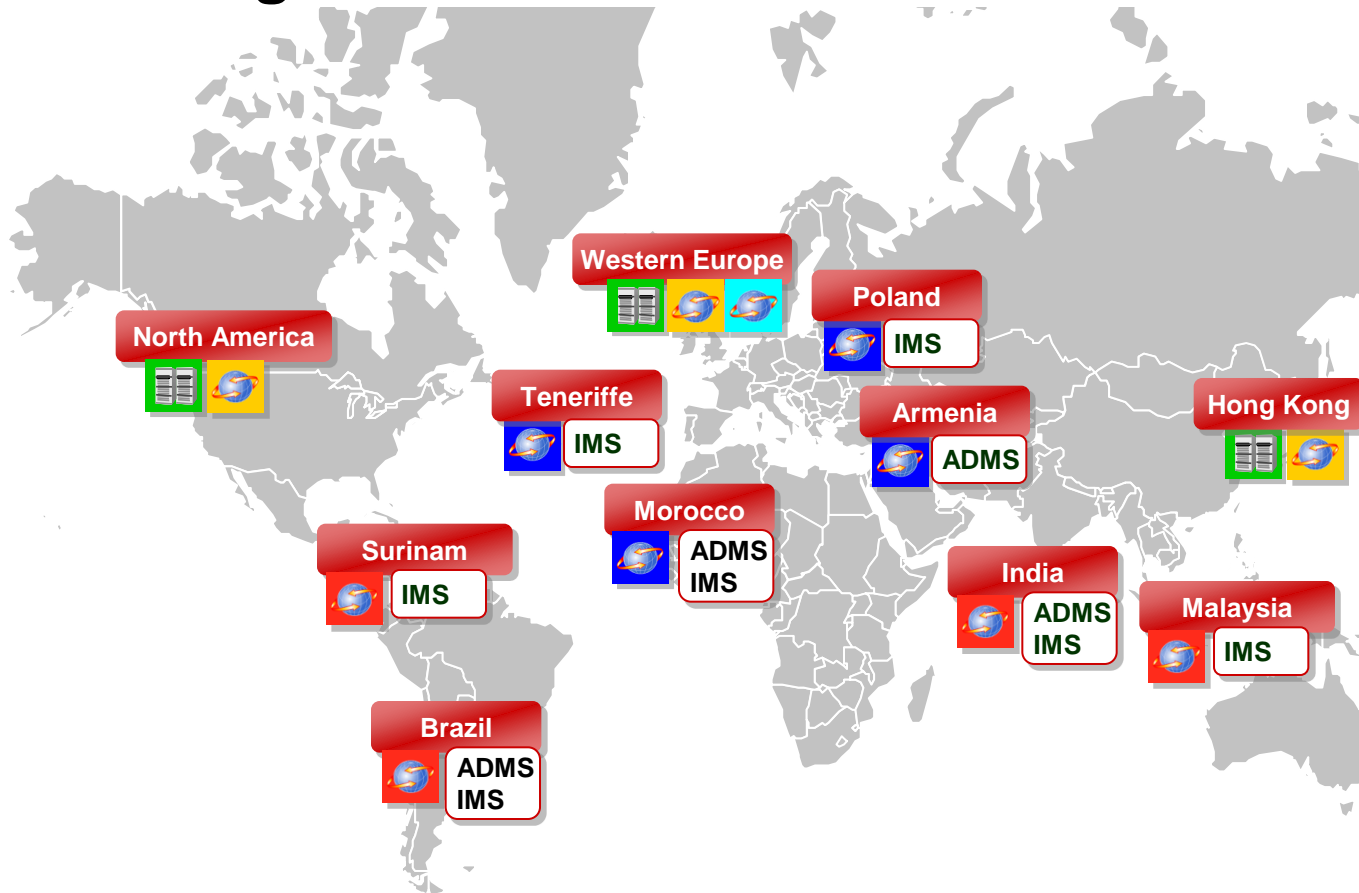
Worldwide presence and
strong european focus






High competencies in
major industry verticals



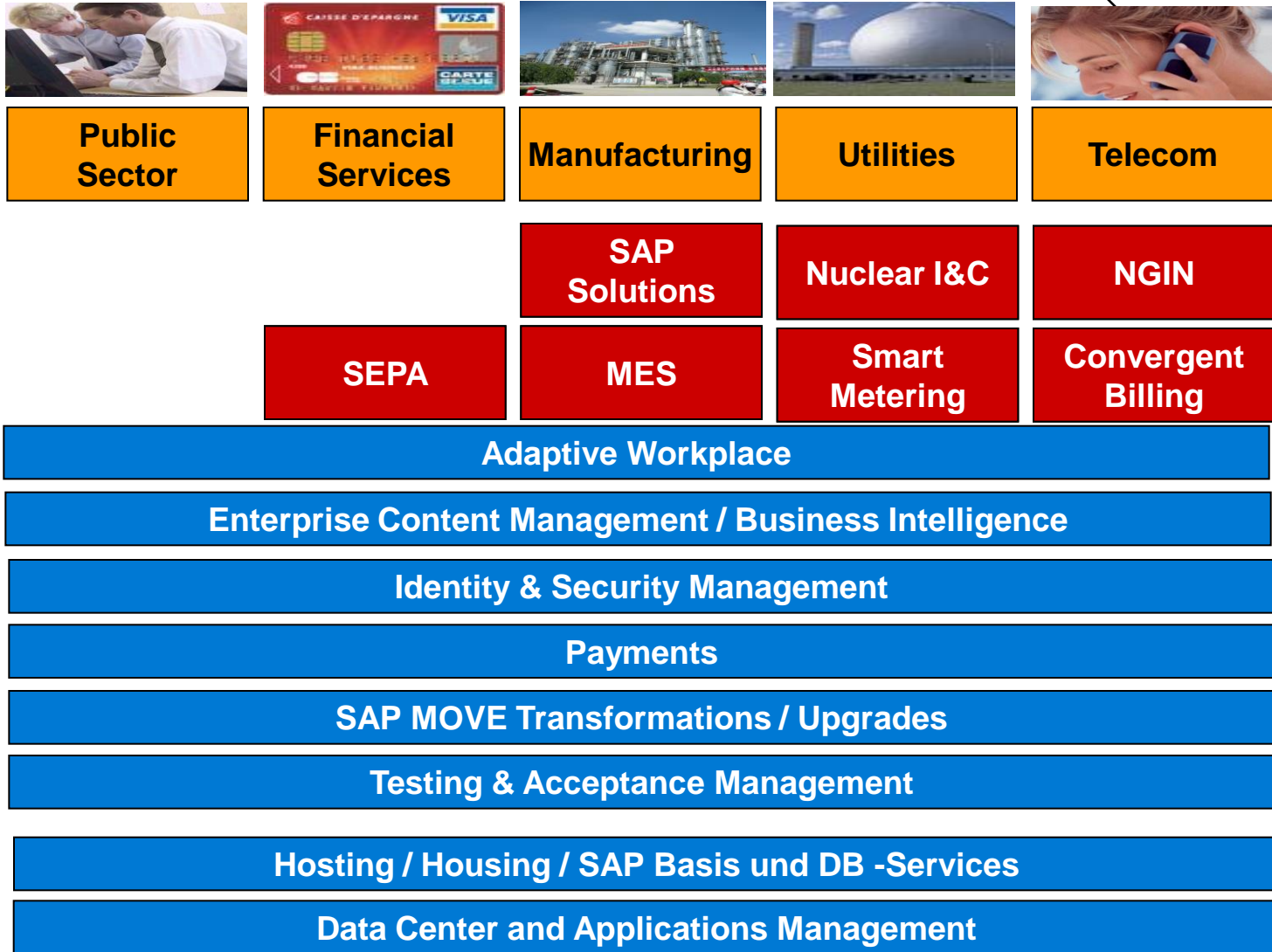
*) Germany, Austria, Poland, Switzerland, Greece, Turkey, South Africa

Balanced Global Sourcing: Providing best in class services



-  Global Datacenter
-  Offshore Service Centers
-  Nearshore Service Centers
-  Closeshore Service Centers
-  On-site/ on shore Service Centers
- ADMS** Application Development & Management Services
- IMS** Infrastructure Management Services

System Integration: Portfolio Overview



Distinctive Offerings

Mainstream Services

Successful Outsourcing Partnerships



e-plus+



Printing for Professionals



The Olympic Games – an example of an intimate client partnership

Atos Origin is the official “Worldwide Information Technology Partner” of the International Olympic Committee (IOC):

- » Salt Lake City 2002*
- » Athens 2004
- » Torino 2006
- » Beijing 2008
- » Vancouver 2010
- » London 2012
- » Sochi 2014
- » Rio de Janeiro 2016

The Olympic Games project is a showcase of a giant design-build-run project (> 4.000 collaborators), demonstrating Atos Origin’s ability to deliver on time and under any circumstances.



Athens 2004-The Olympic rings on fire surrounded by 400 percussionists.

» Client Statement

“Atos Origin continues to demonstrate its ability to seamlessly coordinate the efforts of a complex array of best-of-breed technology partners and suppliers. This unique systems integration capability enables consistent performance across multiple Olympic Games, while simultaneously facilitating the management of costs and complexity.”

Jean-Benoît Gauthier, Technology Director, IOC

What makes us unique: The way we work

Client Intimacy

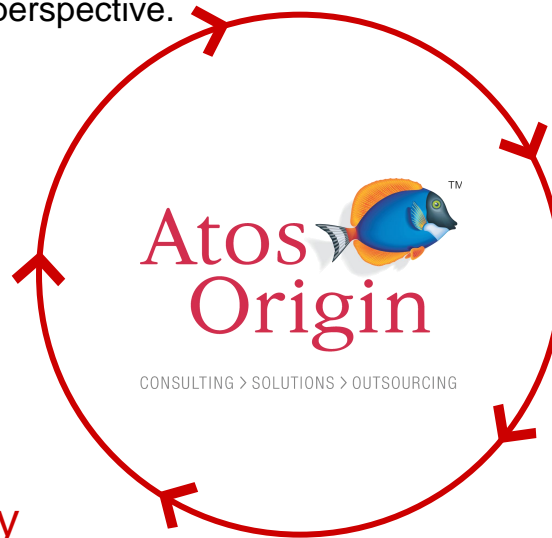
- » We think along industry lines. And, since many of our people joined us through outsourcing, we always see things from a client perspective.

Partnership on eye level

- » With 50.000 people worldwide we've a global reach. However we're a partner on eye level.

Commitment

- » We do what we say. And, we say what we do. This is not just marketing. This is something you'll experience when you work with us.



Integration

- » Since Atos Origin has been formed through the integration of a number of companies, we have developed specialist knowledge: Indeed, one of our major strengths is to integrate people and processes.

Flexibility and Agility

- » Each of our business units have a high degree of freedom. That guaranties a pragmatic, hands-on approach leading to a new level of flexibility and individuality.